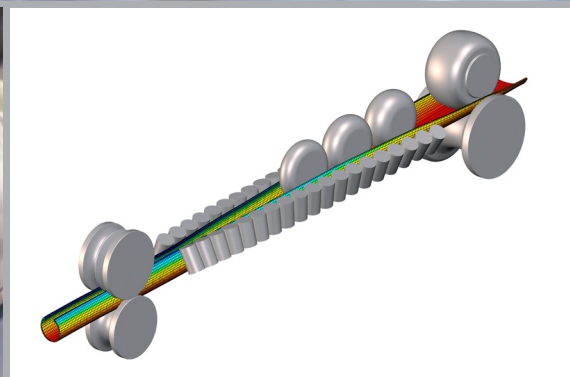
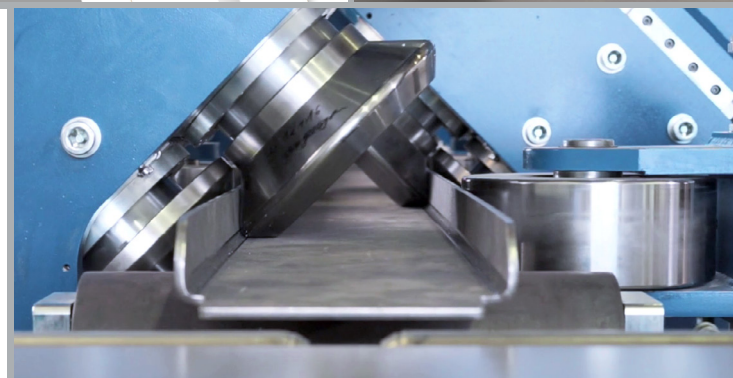
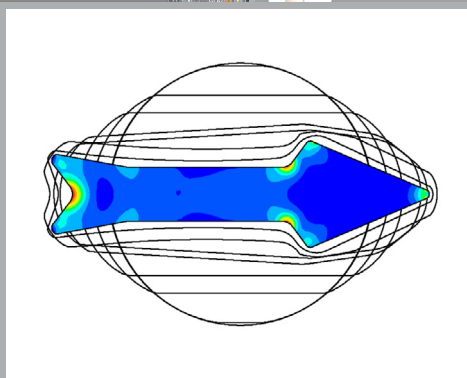
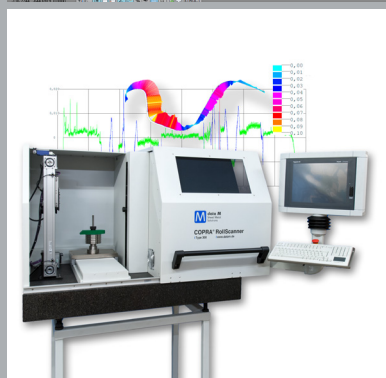
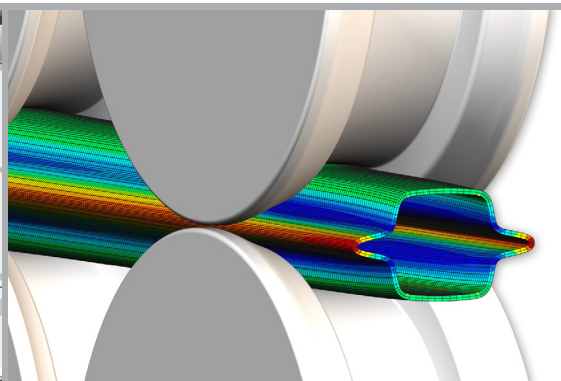
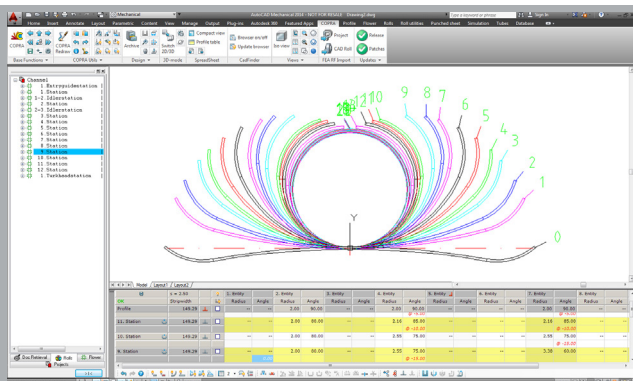


# data M

# Your Partner in the Roll Forming Industry

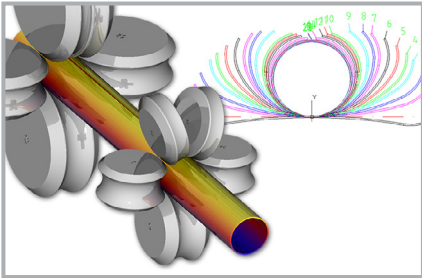


**data M**  
Sheet Metal  
Solutions

# COPRA® Software Solutions – The Standard in Roll Forming

A fast response to customer demands is a real key factor for success. Whoever adapts, retools and brings the product fastest to the market at less cost is going to win the race.

COPRA® RF and COPRA® FEA RF give you the right tools to integrate your high-quality roll design in the production cycle and to accelerate the manufacturing process – for effective roll tool engineering.

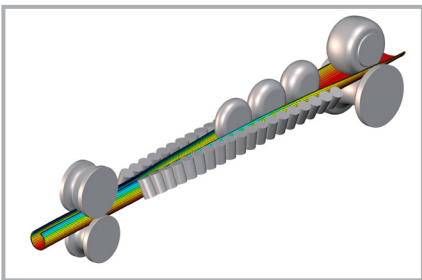


## COPRA® RF Tubes -

### Predefined forming strategies and efficient roll design

The software module COPRA® RF Tubes is the world's leading software solution for the design of roll tools in tube welding lines. Producers of round-, rectangular- as well as shaped tubes find numerous pre-defined strategies for an efficient manufacturing that only needs to be adjusted to the specific demands.

**Numerous software functions help to focus on the essentials**

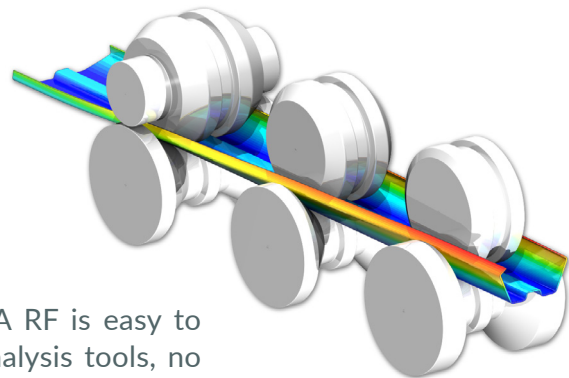


## COPRA® RF Cage Forming -

### Reduced costs through optimized material forming

## COPRA® RF Shaped Tubes -

### Calculation of the forming of round tubes to any shaped tube



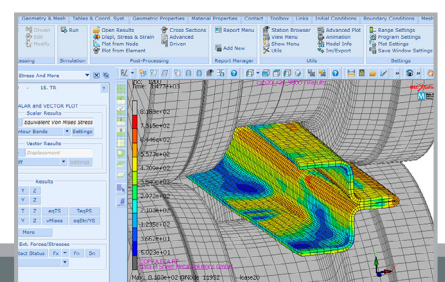
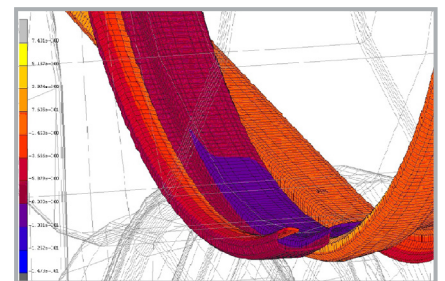
# COPRA® FEA RF – The Virtual Roll Forming Line

Optimized for roll forming operations, COPRA® FEA RF is easy to use. Thanks to numerous auxiliary functions and analysis tools, no specialized FEA knowledge is required.

With COPRA® FEA RF the designer can verify and optimize the tool design in few simulation loops. Additional processing steps such as stretch bending or punching can be easily and quickly integrated into the simulation process. Through the intelligent interconnectedness of our COPRA® products, simulation results will be available for design review immediately.

## Automatic FEA model creation within seconds

The Automatic FEA Report generation assists the design engineer in the evaluation and necessary modifications of the design and guides the optimization accordingly.



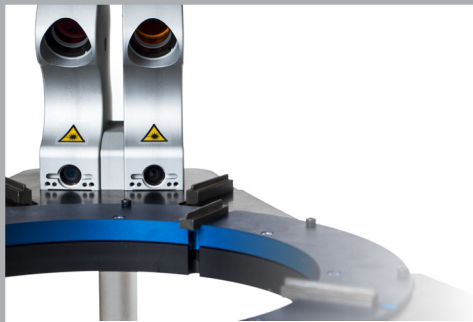
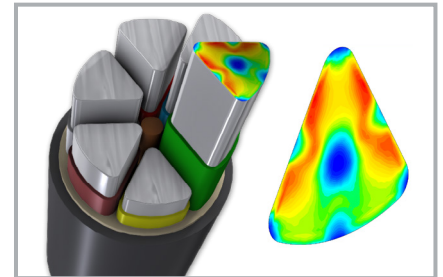
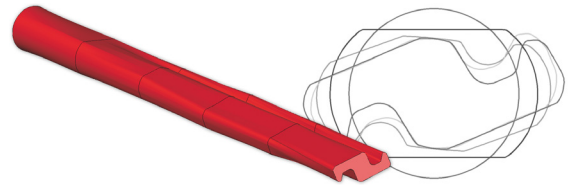
## COPRA® WireRolling – The All-in-One Solution

The software solution COPRA® WireRolling is specifically tailored to the rolling of wire profiles. It contains the design module COPRA® RF WireRolling as well as the simulation software COPRA® FEA RF WireRolling for the verification of wire projects.

### Wire Drawing Simulation

New

The new version of COPRA® FEA RF WireRolling includes a feature to simulate shaped wire drawing in a fast, finite element approach.



## COPRA® Measurement Systems

### COPRA® ProfileScan – Innovative and Cost-efficient Quality Control

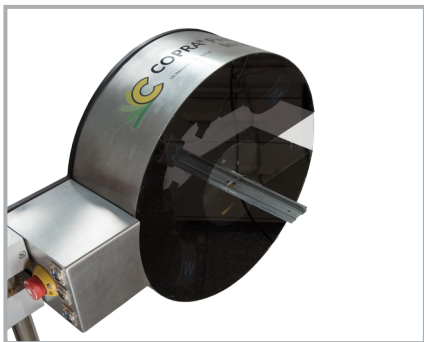
With increasing market competition and rising demand of quality tubes and profiles, quality management and product innovation have become important forces for a sustainable competitive advantage. In order to guarantee a constant high quality, the products need to be measured continuously.

data M has introduced numerous innovations towards intelligent sensor technology and measuring devices in recent years - an important element for digitalization in roll forming.

COPRA® ProfileScan Desktop

COPRA® ProfileScan Inline

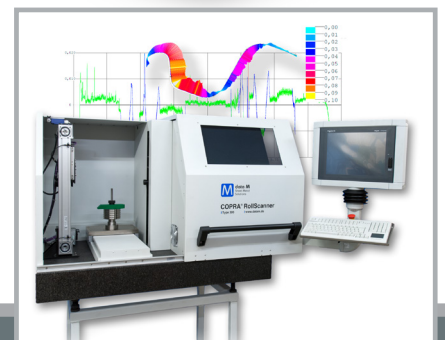
COPRA® ProfileScan Standalone 200



## COPRA® RollScanner – The Fully Integrated Roll Management Solution

The COPRA® RollScanner samples roll data and additionally allows for quality control and roll shape analysis – the first step in the optimization of your tooling.

- | Consistent Quality Control of roll contours
- | Contactless measuring with high precision camera
- | Automatic contour tracing
- | Intelligent Roll Management – digitization and cataloging
- | Reverse Engineering – analysis and reworking of existing rolls





## About Us

The German company data M Sheet Metal Solutions GmbH has been offering innovative, high-quality and state-of-the-art products and services for the roll forming industry.

Our expertise unfolds in various commercial applications united in the COPRA® EcoSystem. As reputed R&D partner for machine builders, users and research institutions, data M has always been at the forefront in its field.

For almost four decades, we have accumulated unique knowledge in the field of roll forming.

Our software packages COPRA® RF and COPRA® FEA RF are worldwide leading solutions for design and simulation. Together with our optical measurement devices we offer a holistic solution for the roll forming industry.

Tailored to the requirements and needs of today's roll forming industry our product portfolio brings digitalization and industry 4.0 to the roll forming sector.

With our international partner network, we provide excellent support to customers all over the world.

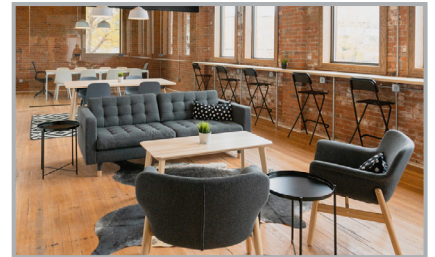
### A selection of industries data M works for:



Automotive



Construction



Furniture



Oil & Gas



Agriculture



Railway



Shipbuilding



Solar Components



Aerospace



**data M Sheet Metal Solutions GmbH**

Am Marschallfeld 17 | 83626 Valley | Germany

Tel.: +49 8024 640 0

[datam@datam.de](mailto:datam@datam.de) | [www.datam.de](http://www.datam.de)