

Press Release

Press contact: Viviane Bauer

EuroBLECH 2024

data M Sheet Metal Solutions Enhances COPRA RF: Version 2025 now with BricsCAD Support and an Improved DTM Module

Booth C15, Hall 11

Valley, 17.09.2024 The Bavarian company data M Sheet Metal Solutions GmbH is presenting the new version of COPRA RF with numerous innovations at EuroBLECH 2024. Highlights of Version 2025 include significant improvements to the Deformation Technology Module (DTM) and integration with Bricsys NV's BricsCAD as an additional CAD system alongside Autodesk's AutoCAD. The release of the new version is to be published before the end 2024.

COPRA DTM: Significant improvements through real-time monitoring, complete with an optimized user interface, lead to considerable time savings

The COPRA RF DTM – Deformation Technology Module – calculates the maximum occurring values of longitudinal strains. This allows projects to be quickly assessed for feasibility, without detailed tool design and FEA simulation. The 2025 version of COPRA RF offers numerous significant improvements to the module:

The new “*real-time*” monitoring of longitudinal strains feature, allows the designer to directly track the influences of a modification, in a separate window or on a second monitor. Changes to the forming flower do not require re-calculation anymore, ensuring the workflow is uninterrupted. Modifications to the forming flower in the COPRA Spreadsheet project are also displayed in real-time in the DTM window. This significantly improves the workflow.

Thanks to the "intuitive user interface," users can now easily switch between different views and chart types, analyze forming parameters such as edge strain or strain distribution, and selectively choose stations or passes to be displayed in the DTM charts or in COPRA. Additionally, the 3D view of the selected stations can be rotated within the DTM window and the DTM results are immediately updated while working on the profile flower.

COPRA RF 2025: Now with BricsCAD Support

For nearly 40 years, data M Sheet Metal Solutions GmbH has been offering its COPRA RF design software for roll forming, throughout this time we have relied on Autodesk's market-leading CAD software AutoCAD for a user-friendly interface.

With the new release of COPRA RF, there is now an alternative solution:

COPRA RF 2025 now supports not only AutoCAD 2025 but also BricsCAD 24 - introducing a new CAD system option. BricsCAD is a CAD software developed by the Belgian company Bricsys NV, (part of Hexagon AB). As an alternative to AutoCAD, it offers almost identical functionality for creating and editing 2D drawings and 3D models, moreover it supports the DWG file format—the native format of AutoCAD. Thus, allowing for seamless collaboration between users of both systems.

Managing Director Maximilian Sedlmaier emphasizes: "COPRA RF 2025 provides full functionality with both AutoCAD and BricsCAD, without any limitations compared to the proven AutoCAD integration. This offers even greater flexibility in software choice."

About data M

data M Sheet Metal Solutions GmbH specializes in software solutions and services for roll formers. The programs COPRA RF and COPRA FEA RF are the leading solutions for design and simulation worldwide. The company also offers the optical measuring systems COPRA ProfileScan Desktop and COPRA RollScanner for efficient quality control of products and roll tools. In addition, data M is also a service provider for design, simulation and analysis in roll forming – it maintains an international partner network and has subsidiaries worldwide.

Fig. 1: COPRA DTM: Significant improvements through real-time monitoring, complete with an optimized user interface, lead to considerable time savings.

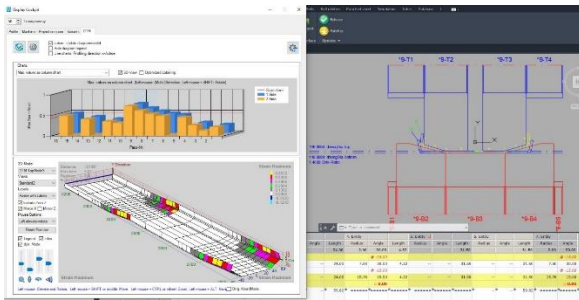


Fig. 2: COPRA RF 2025: Now with BricsCAD Support

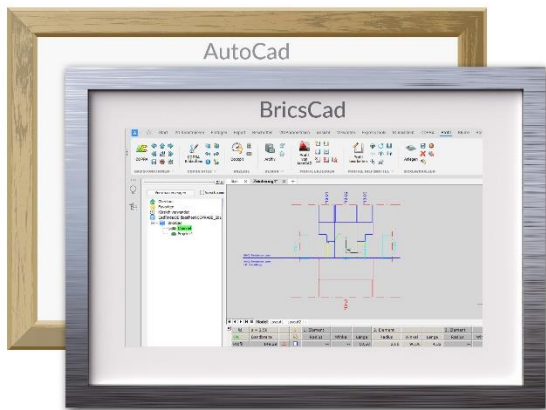


Fig. 3: COPRA RF Logo



Fig. 4: data M Sheet Metal Solutions Logo



Reprint free;
Author's copy kindly requested.
Valley, September 2024.