

data M EcoSystem – All under one Roof

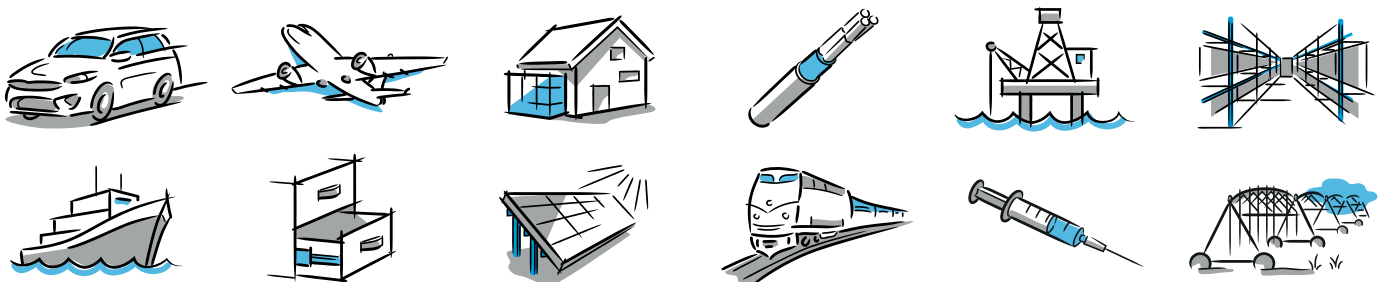
The German company data M Sheet Metal Solutions GmbH has been offering innovative, high-quality and state-of-the-art products and services for the roll forming industry.

Our expertise unfolds in various commercial applications united in the COPRA® EcoSystem. Our portfolio has grown steadily in recent years. Above all, however, we have consistently been pushing forward to link all individual components in one network.

As in the roll forming industry, too, productivity must be increased through intelligent and interconnected systems in development and production. This is not only necessary for remaining competitive, but also to be able to respond more flexibly to changing requirements.

Tailored to the requirements and needs of today's roll forming industry our product portfolio brings digitalisation and industry 4.0 to the roll forming sector.

A selection of industries data M works for:

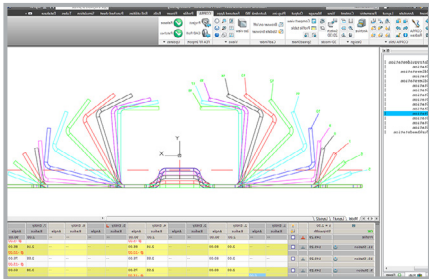


Your Partner in the Roll Forming Industry

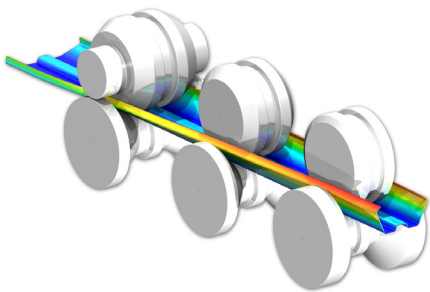
Since almost four decades we have built up a unique knowledge in the field of roll forming. Our products comprise all the experience of our long-serving employees that are not only software developers or engineers, but rather genuine roll forming experts.

Software Division

Our programs COPRA® RF and COPRA® FEA RF are market leaders worldwide for design and simulation.



COPRA® RF covers the whole roll forming process chain and provides tailor-made software solutions for tube makers and profile manufacturers alike.



COPRA® FEA RF calculates even complex roll forming operations with hundreds of stations as well as pre- and post-processing manufacturing steps reliably and fast. Model creation is fully automated - there is no need for a dedicated FEA specialist.



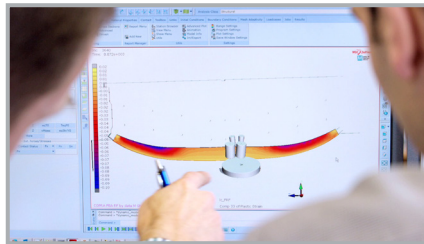
Service Division

With unparalleled expertise in roll forming, we are in high demand as consultants for the industry's greatest challenges and most demanding design projects.



Our portfolio includes a variety of services such as new tool set design, the optimization of an existing roll toll set, roll scanning, investigation of pre-operation steps and many more.

We are also your partner when it comes to the innovative 3D Roll Forming technology.



Here we merge our knowhow, CAE tools and hardware (COPRA® 3D Roll Forming Center) – an ideal approach for an efficient process layout and prototyping of 3D roll formed profiles, e.g. chassis parts for lightweight commercial vehicles.

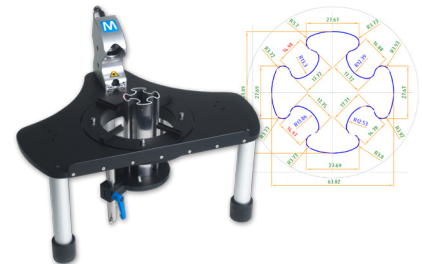
data M Sheet Metal Solutions GmbH
 Am Marschallfeld 17 | 83626 Valley | Germany
 Tel.: +49 8024 640 0
 datam@datam.de | www.datam.de

Automation Division

In order to guarantee a constant high quality, the products need to be measured continuously.

data M has introduced numerous innovations towards intelligent sensor technology and measuring devices in recent years, an important element for digitalization in roll forming.

- COPRA® ProfileScan Desktop
- COPRA® ProfileScan Inline
- COPRA® ProfileScan Standalone 200



The COPRA RollScanner® samples roll data and additionally allows for quality control and roll shape analysis – the first step in the optimization of your tooling.

